



CASPER SECURE™

SERVER EDITION 3.0

STARTUP DISK CREATOR GUIDE



Future Systems
SOLUTIONS

Copyright and Trademark Information

Information in this document is subject to change without notice. Federal law prohibits unauthorized use, duplication, and distribution of any part of this document in any form or by any means, electronic or mechanical, for any purpose, without the express written permission of Future Systems Solutions.

Future Systems Solutions may have patents, trademarks, copyrights, or other intellectual property rights covering subject matter in this document.

Copyright © 2012 Future Systems Solutions, Inc. All Rights Reserved.

Casper, the Casper logo, Casper Secure, Drive2Drive, SmartClone, SmartWrite, AccuClone, SmartAlert, SmartSense, SmartStart, and 1-Click Cloning are either registered trademarks or trademarks of Future Systems Solutions, Inc. BitLocker, Microsoft, Windows and Vista are registered trademarks of Microsoft Corporation. Other brand and product names may be trademarks or registered trademarks of their respective holders.

Table of Contents

- Introduction1**

- System Requirements.....1**
 - Installation Requirements 1
 - Run-time Requirements..... 1

- Casper Secure Startup Disk Creator Setup2**
 - Running the Casper Secure Startup Disk Creator Setup Program 2
 - Installing the Windows 7 Automated Installation Kit 2

- Creating and Using a Casper Secure Startup Disk3**
 - Creating a Casper Secure Startup Disk 3
 - Using the Casper Secure Startup Disk 8
 - Loading specific drivers after booting via the Casper Secure Startup Disk 9

Introduction

The Casper Secure™ Startup Disk is an optional component which enables you to boot and run Casper Secure Server Edition directly from a USB flash drive, CD-ROM or DVD disc with full access to external USB and Firewire hard disks. *The Casper Secure Startup Disk is required only if you need to restore a backup from an external hard drive to the primary system drive because Windows is unable to boot and run from the external hard drive.*

System Requirements

While the Casper Secure Startup Disk is designed to run on virtually all Windows 2000 and later systems, installation and creation of the Casper Secure Startup Disk must be performed on a system running Windows XP (SP3) or later.

Installation Requirements

- Windows Server 2008 R2, Windows Server 2008, Windows Server 2003, Windows 7, Windows Vista, or Windows XP (SP3)
- 5GB available disk space
- 1GB RAM (2GB or more recommended)
- Windows 7 Automated Installation Kit (AIK)

Run-time Requirements

- Windows Server 2008 R2, Windows Server 2008, Windows Server 2003, Windows Home Server, or Windows 2000 and 2000 Advanced Server
- PGP Desktop version 9.6x or later, or BitLocker Drive Encryption feature enabled
- 500MB available disk space
- 512MB RAM (1GB or more recommended)

Casper Secure Startup Disk Creator Setup

The Casper Secure Startup Disk Creator Setup program will install the Startup Disk Creator wizard, which is used to create and configure the Casper Secure Startup Disk.

Running the Casper Secure Startup Disk Creator Setup Program

1. Start the Casper Secure Startup Disk Creator Setup program.
The Welcome to the Casper Secure Startup Disk Creator Setup Wizard dialog will appear.
2. At the Welcome to the Casper Secure Startup Disk Creator Setup Wizard dialog, click **Next**.
The **Read the Future Systems Solutions License Terms** dialog will appear. In order to proceed with the installation of the Casper Secure Startup Disk Creator, you must agree to the terms of the license that is displayed.
3. Read the License Agreement, select **I accept the terms of this agreement**, and then click **Next**.
The **Choose the installation you want** dialog will appear.
4. Click **Install Now**.
The Casper Secure Startup Disk Creator files are added to your system.
5. Click **Create Startup Disk Now** to launch the Startup Disk Creator wizard.

Installing the Windows 7 Automated Installation Kit

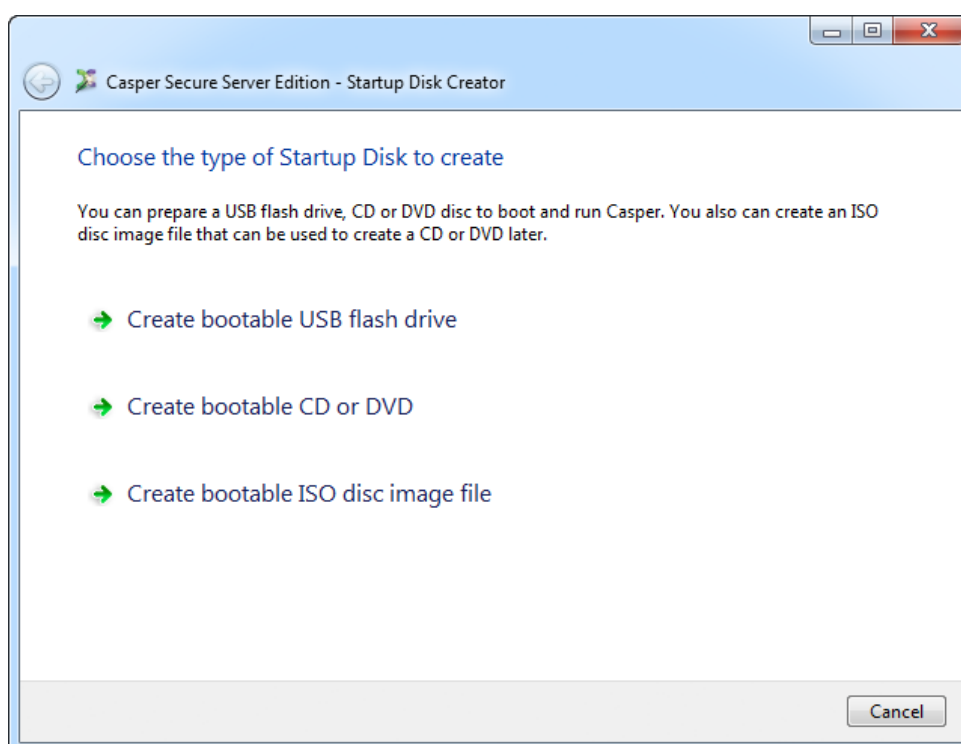
The Microsoft Windows 7 Automated Installation Kit (AIK) must be installed prior to creating a Casper Secure Startup Disk. If the Windows 7 AIK is not installed, the Startup Disk Creator will attempt to download and install it before creating a Startup Disk for the first time. Alternatively, you can download and install the Windows 7 AIK manually. For details, please see <http://www.fssdev.com/link?id=100>.

Creating and Using a Casper Secure Startup Disk

The Startup Disk Creator wizard will prepare a USB flash drive, CD, or DVD disc to boot and run Casper Secure Server Edition. It also can create an ISO disc image file that can be used to create a CD or DVD later.

Creating a Casper Secure Startup Disk

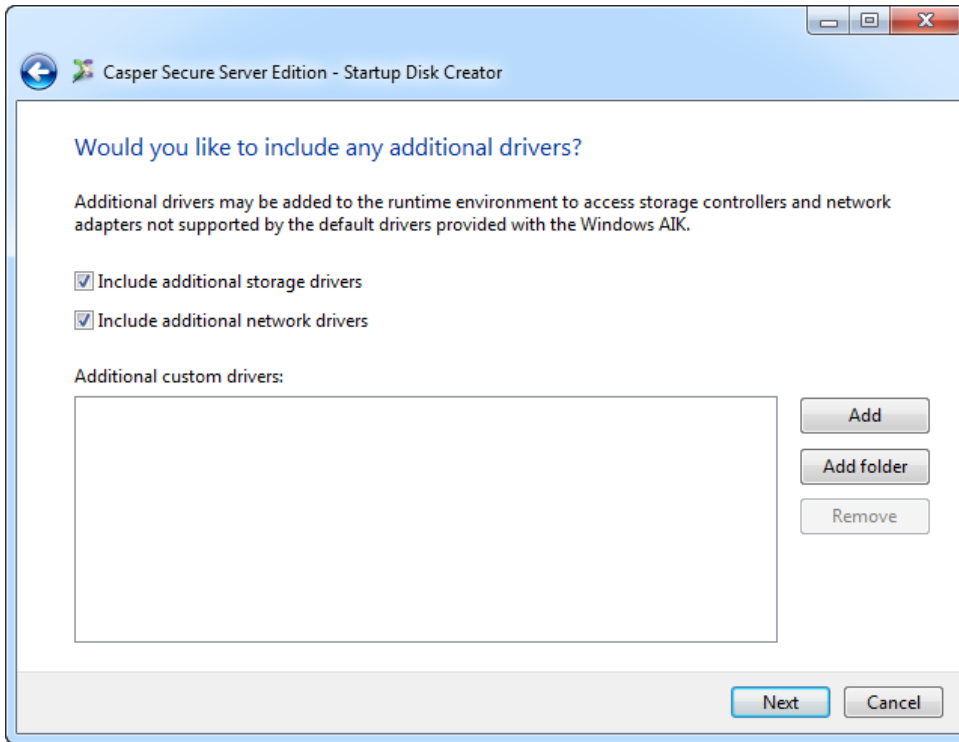
1. Open **Startup Disk Creator**. (Start -> [All] Programs -> Casper Secure 3.0 Server Edition -> Startup Disk Creator)
2. Choose the type of Startup Disk to create.



There are three options:

- **Create a bootable USB flash drive.** This option will prepare a USB flash drive to boot and run Casper Secure Server Edition.
- **Create a bootable CD or DVD.** This option will prepare a CD or DVD disc to boot and run Casper Secure Server Edition.
- **Create a bootable ISO disc image file.** This option will create an ISO disc image file, which can be used to create a CD or DVD disc later or used to emulate a bootable Casper Secure Startup Disk CD within a virtual environment.

3. Specify additional drivers to add to the runtime environment. Additional drivers may be required to provide access to storage devices and network resources not supported by the drivers included within the Windows AIK.

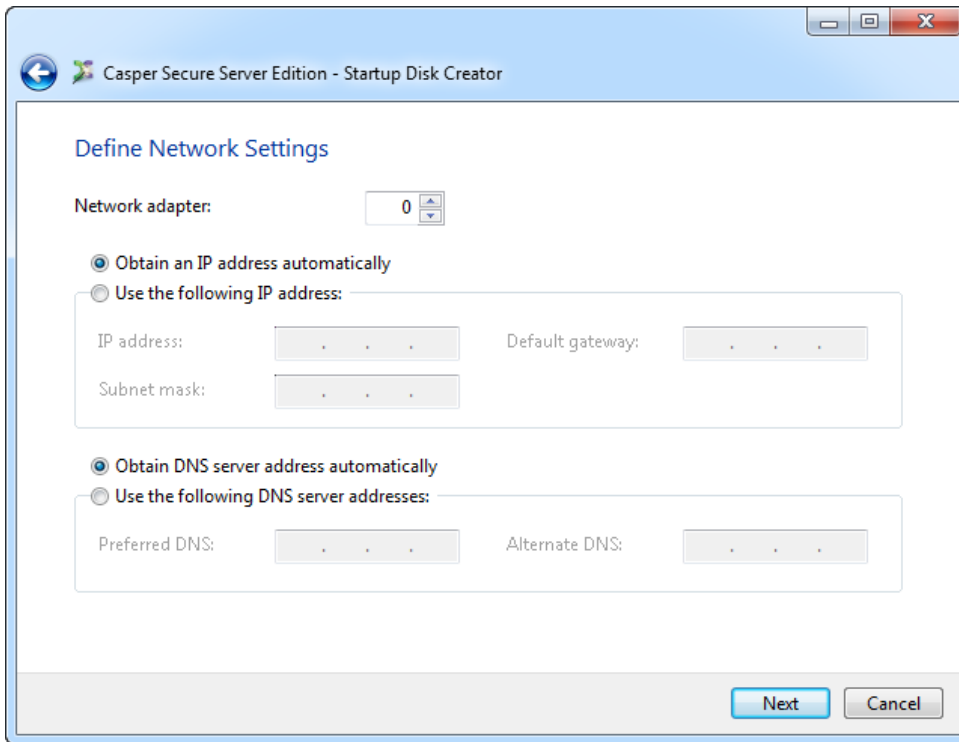


Check **Include additional storage drivers** to add a collection of popular third-party storage controller drivers. Check **Include additional network drivers** to add a collection of popular third-party network drivers. Both options provide out-of-the-box support for a broad range of hardware.

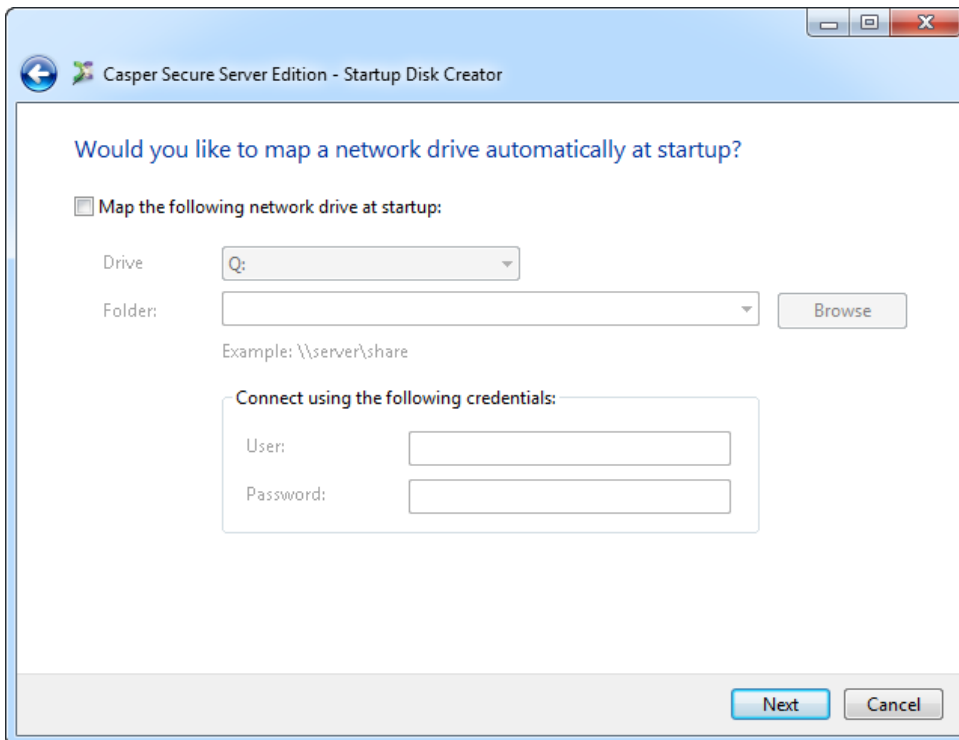
Click **Add** and select the Setup Information File (INF) to include a specific driver. Because the WinPE runtime environment is 32-bit, the selected driver must be 32-bit. To add more than one driver at a time, click **Add folder** and select the folder containing the drivers. All drivers within the selected folder and within any subfolders will be added to the runtime environment. Incompatible drivers, including 64-bit drivers, will be ignored.

NOTE: Adding a large number of custom drivers with **Add** or **Add folder** can significantly increase the amount of time required to create the Startup Disk.

4. Define the network configuration for the runtime environment. You can configure a specific network configuration for each adapter discovered within the runtime environment.

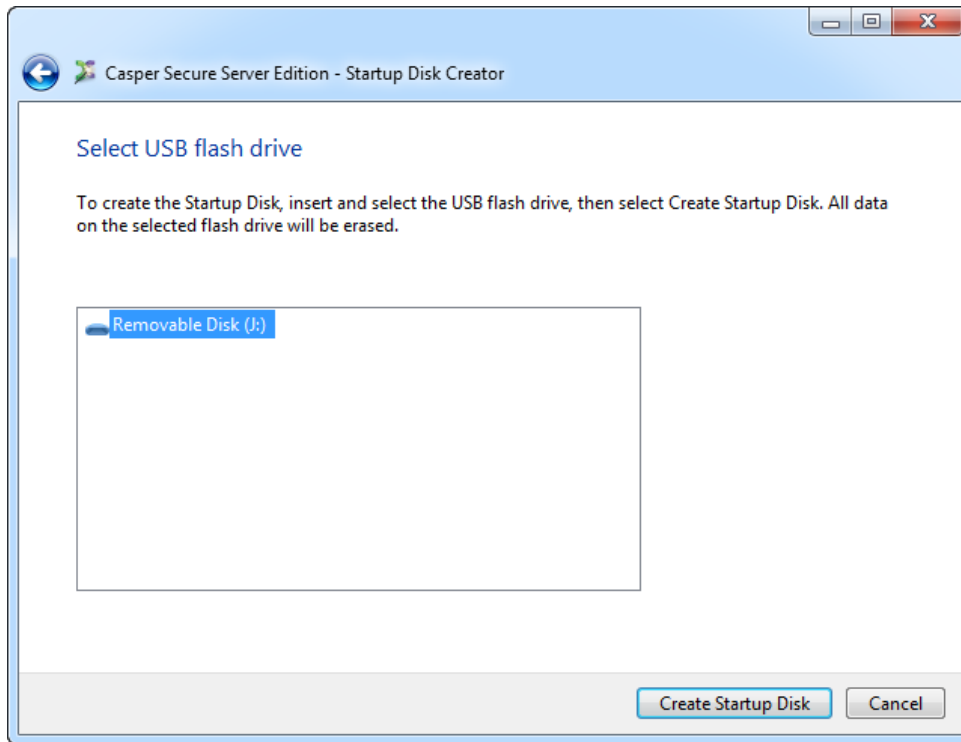


5. Choose whether to have a network drive mapped automatically at startup.



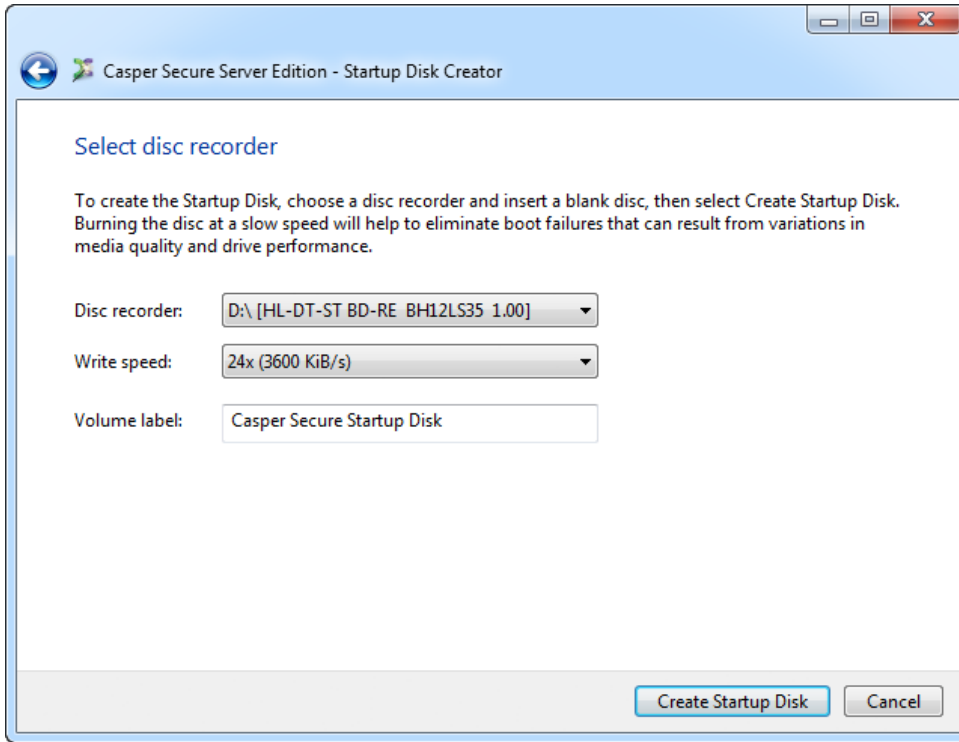
The **User** and **Password** fields are optional and may be left blank. You will be prompted to provide the missing credentials if necessary at startup.

6. If creating a bootable USB flash drive, insert and select the USB flash drive, then click **Create Startup Disk**. Existing data on the flash drive will be erased.

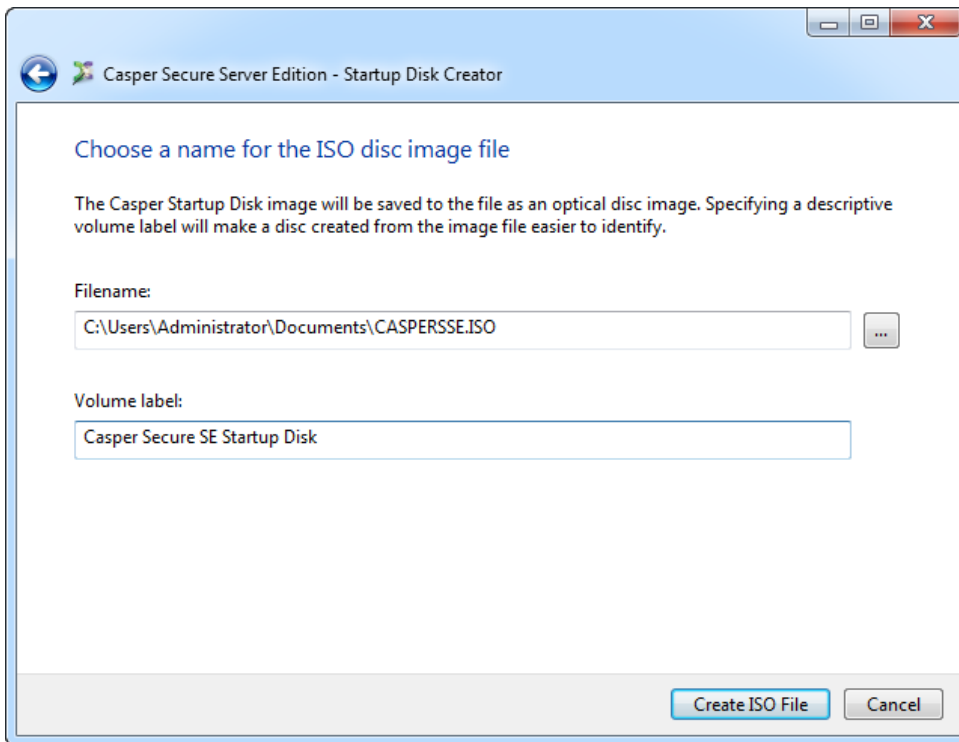


WARNING: All data on the selected flash drive will be erased!

If creating a bootable CD or DVD, select a disc recorder and insert a blank disc, then click **Create Startup Disk**.



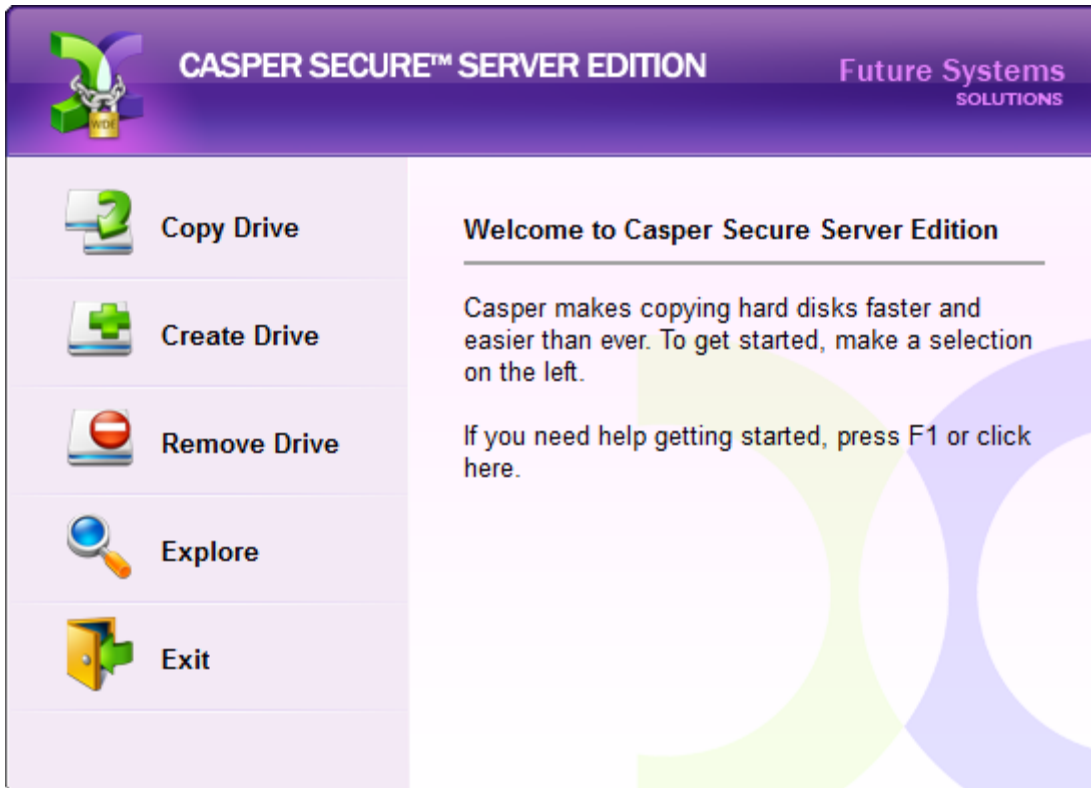
If creating a bootable ISO disc image file, type a name for the file and click **Create ISO File**.



Using the Casper Secure Startup Disk

If you are unable to boot the server directly from the Casper Secure backup, you can use the Casper Secure Startup Disk to restore the server's system disk device from the backup. For example, if you used an external hard disk for the backup, and the server will not boot and run directly from the external hard disk, you can restore the server by booting the Casper Secure Startup Disk and using Casper Secure Server Edition to copy the external hard disk to the server's internal system hard disk or RAID array.

Booting a computer from the Casper Secure Startup Disk may take several minutes. Once it has completed the boot process, the familiar Casper Secure Server Edition console will display.



CAUTION: *When running from the Casper Secure Startup Disk, temporary disk unit numbers and drive letters will be assigned, which may be different than those assigned by Windows when the system is running normally.*

Loading specific drivers after booting via the Casper Secure Startup Disk

The Casper Secure Startup Disk boots and runs Casper Secure within a self-contained Windows Preinstallation (WinPE) environment. If you need to load a driver that was not included when the Startup Disk was created, you can load the driver after booting the computer from the Startup Disk.

Follow this procedure:

1. Click **Explore** to open Casper Explorer
2. From the **Tools** menu, click **Load driver**
3. Browse to the Setup Information File (.INF) of the driver package that contains the hardware driver to load and click **Open**.

NOTE: The WinPE environment used by the Casper Secure Startup Disk is 32-bit, which means all drivers must be 32-bit.
