



C A S P E R™

SERVER EDITION 11

SMARTRESTORE™ GUIDE



Future Systems
SOLUTIONS

Copyright and Trademark Information

Information in this document is subject to change without notice. Federal law prohibits unauthorized use, duplication, and distribution of any part of this document in any form or by any means, electronic or mechanical, for any purpose, without the express written permission of Future Systems Solutions.

Future Systems Solutions may have patents, trademarks, copyrights, or other intellectual property rights covering subject matter in this document.

Copyright © 2013-2021 Future Systems Solutions, Inc. All Rights Reserved.

Casper, the Casper logo, Casper Secure, Drive2Drive, SmartClone, SmartWrite, AccuClone, SmartAlert, SmartSense, SmartStart, SmartRestore, and 1-Click Cloning are either registered trademarks or trademarks of Future Systems Solutions, Inc. BitLocker, Microsoft, Windows and Vista are registered trademarks of Microsoft Corporation. Other brand and product names may be trademarks or registered trademarks of their respective holders.

Table of Contents

- Introduction 4**
 - System Requirements 4**
- Getting Started 5**
- Restoring a System Backup..... 6**
 - Example 1: Restoring the Most Recent System Backup 7**
 - Example 2: Restoring an Earlier System Backup 9**
 - Example 3: Restoring a Different System Backup..... 12**

Introduction

Casper SmartRestore™ makes restoring a backup simple. When you boot a server from a Casper Startup Disk or a backup disk equipped with the Casper Startup and Recovery Environment, SmartRestore automatically locates all available backups for the server. You choose which backup to restore, and Casper SmartRestore does the rest.

NOTE: This guide provides an overview of Casper SmartRestore. For additional assistance, please refer to the Casper User Guide or detailed help files included within the program.

System Requirements

- Windows Server 2019, Windows Server 2016, Windows Server 2012 R2, Windows Server 2012, Windows Server 2008 R2, Windows Server 2008, Windows 10, Windows 8.x, Windows 7, or Windows Vista¹
- 500MB available disk space
- 1GB RAM (2GB or more recommended)
- Backup device (additional internal or external hard disk drive)

¹ Casper Server Edition is not designed for use with Windows Server for Itanium-based systems or Windows NT. Disk image file backups are supported only when running on Windows Server 2008 and later or when booting and running from the Casper Server Edition Startup Disk. The VHDX image file format is supported only when running on Windows Server 2012 and later or when booting and running from a Casper Server Edition Startup Disk created with the Windows 8.x ADK or later. Booting from a USB connected hard disk requires a computer with BIOS or UEFI firmware support for booting from USB hard disk drive (USB-HDD) devices. Not all computers support booting and running from USB hard disk type devices. Some computers equipped with both USB 3.0 and USB 2.0 ports will support booting only when the device is connected to a USB 2.0 port.

Getting Started

Casper SmartRestore will start automatically whenever you boot the server from a Casper Startup Disk. If you do not have a Casper Startup Disk, you can create one by using the Casper Startup Disk Creator on another computer when necessary. For details on creating and using a Casper Startup Disk, please see the **Casper Startup Disk Creator Guide**.

If you added the Casper Startup and Recovery Environment directly to the backup disk, Casper SmartRestore will also start automatically when you boot the server from the backup disk. For details on creating a backup disk which includes the Casper Startup and Recovery Environment, please refer to the **Creating a Restore-Point Backup** example in either the **Casper SmartStart Guide** or **Casper User Guide**.

Booting a computer from either a Casper Startup Disk or a backup disk equipped with the Casper Startup and Recovery Environment may take several minutes. Once it has completed the boot process, Casper SmartRestore™ will attempt to automatically identify your most recent backup and prompt you to begin the restore. If your backup is not attached, or if Casper SmartRestore is unable to locate it or identify the server system disk device, Casper SmartRestore will open the Casper console so that you can perform a manual restore. For details on using the Casper console to perform a manual restore, please see **Restoring a System Backup** in the **Casper User Guide**.



While booted and running from a Casper Startup Disk or from another backup disk equipped with the Casper Startup and Recovery Environment, you can attach a backup disk to automatically restart Casper SmartRestore. For example, if your backup was not attached when you originally booted the computer from the Casper Startup Disk and the Casper console is currently displayed, attaching your backup disk will automatically restart Casper SmartRestore.

Restoring a System Backup

If the Windows server's system disk device fails or becomes corrupted, you can restore the server to working order from the Casper backup. When using Casper SmartRestore, the process is essentially the same whether you have a bootable backup, a restore-point backup, or a combination of both.

If you created a restore-point backup and added the Casper Startup and Recovery Environment to the backup disk, you can boot the server directly from the backup disk to start Casper SmartRestore and perform the restore. When restoring a bootable backup, or when the Casper Startup and Recovery Environment has not been added to the backup disk, the Casper Startup Disk must be used to boot the server to start Casper SmartRestore and perform the restore.

The following examples illustrate how to use Casper SmartRestore to restore a backup.

Example 1: Restoring the Most Recent System Backup. This example demonstrates how to restore the most recent backup identified by Casper SmartRestore.

Example 2: Restoring an Earlier System Backup. This example illustrates how to select a specific restore-point to restore the system disk device to an earlier point-in-time.

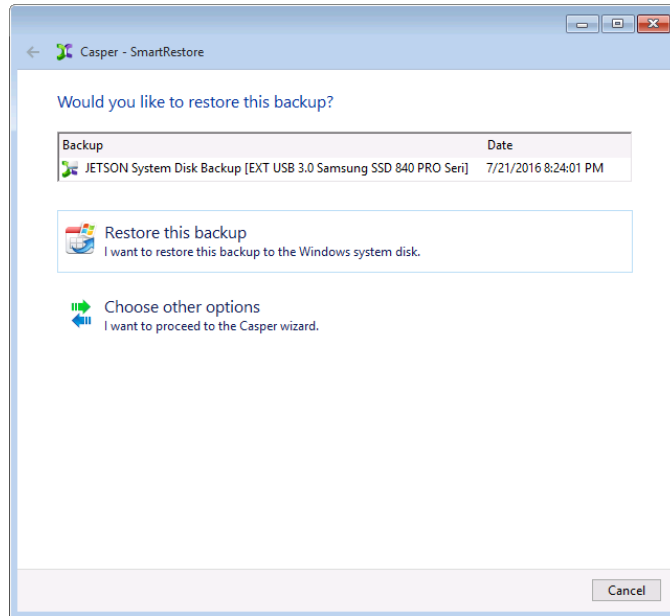
Example 3: Restoring a Different System Backup. This example shows how to choose which backup to restore when multiple backups have been discovered for the server.

Example 1: Restoring the Most Recent System Backup

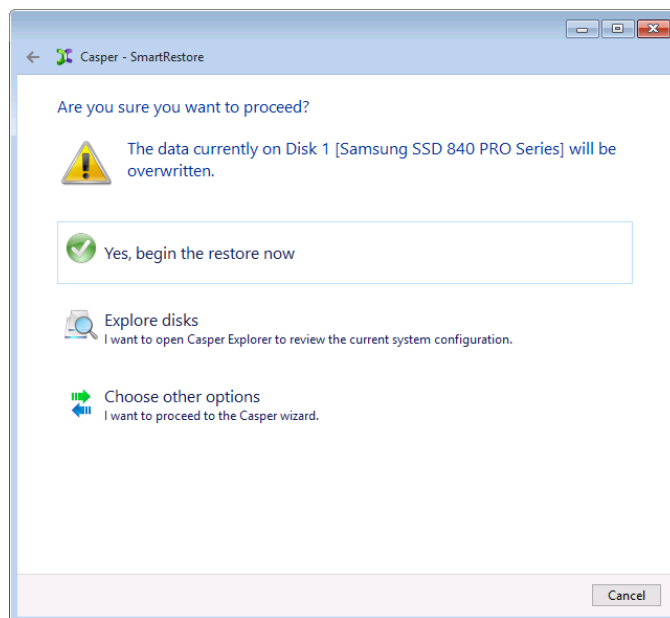
When SmartRestore begins, it will always prompt you to restore the most recent backup first.

Assuming the computer is presently booted to the Casper Startup and Recovery Environment and SmartRestore was able to locate your backup, the following procedure illustrates how to quickly restore the most recent backup to either the original system disk device or a replacement disk device.

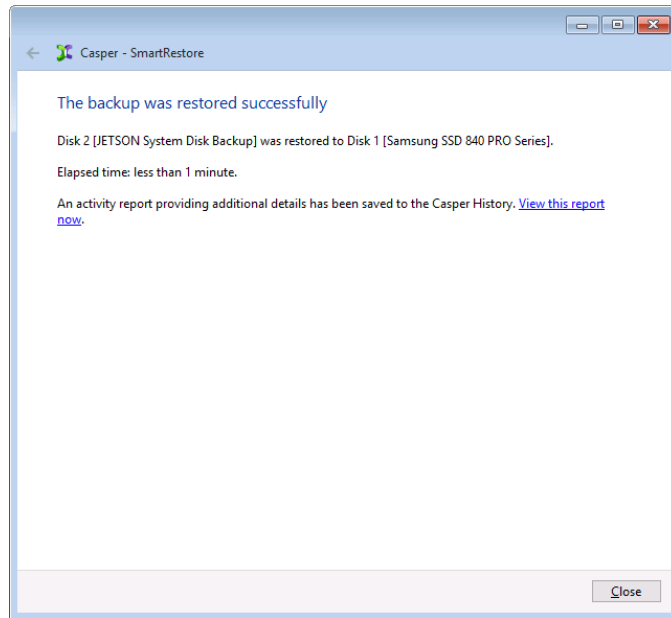
1. Select **Restore this backup**.



2. If restoring to the original system disk device, Casper will warn you that the contents will be overwritten. Click **Yes, begin the restore now**.



3. When Casper has completed the restore, click **Close**.

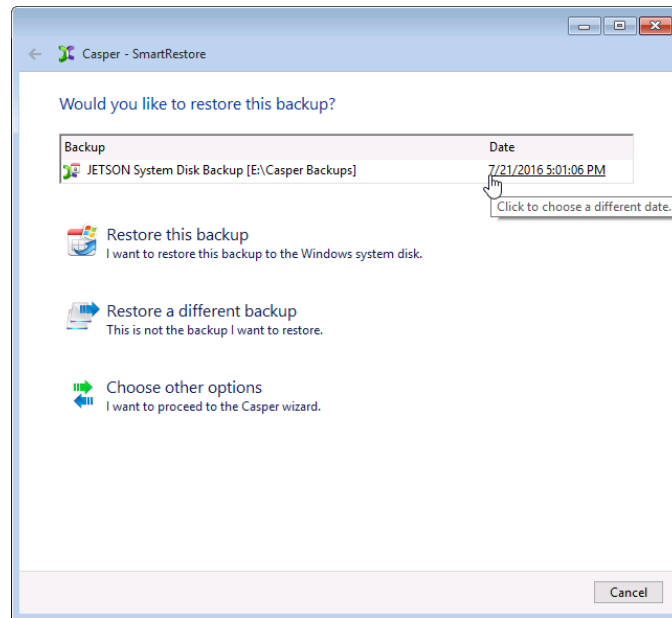


Example 2: Restoring an Earlier System Backup

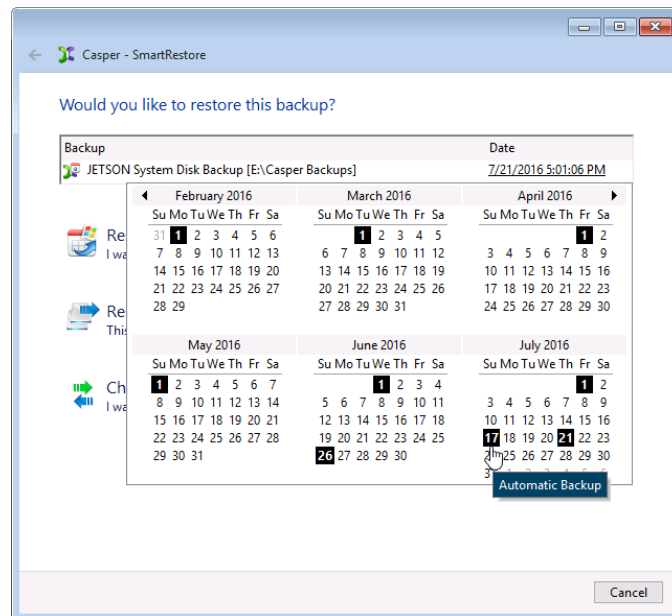
When more than one restore-point exists for a backup, you can choose the specific restore-point to restore.

Assuming the computer is presently booted to the Casper Startup and Recovery Environment and SmartRestore was able to locate your backup, the following procedure illustrates how to choose a specific restore-point when restoring the system disk device.

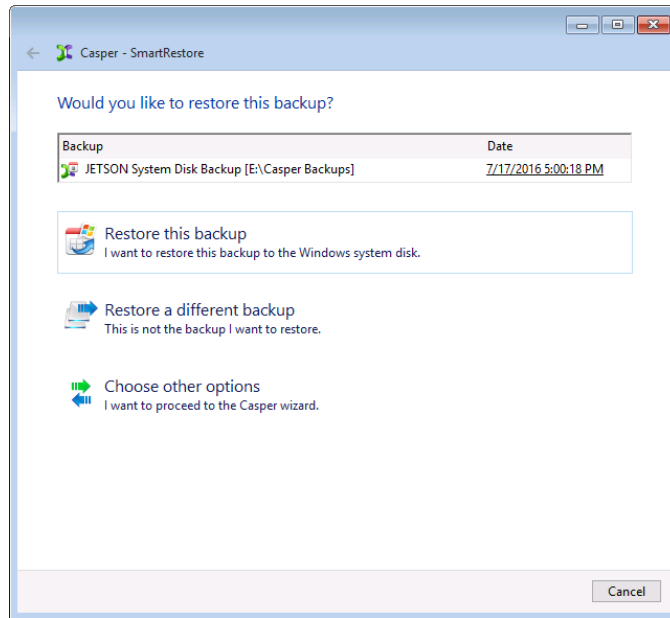
1. Click the date displayed next to the backup name to open the restore-point selector calendar.



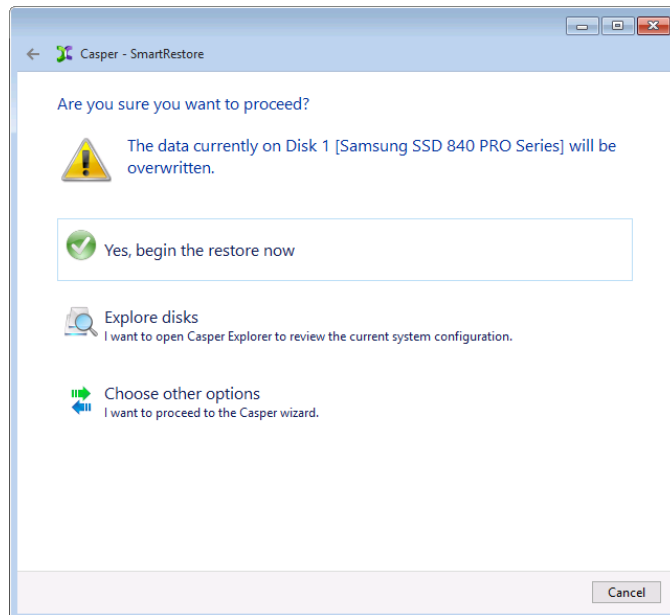
2. Dates with one or more available restore-points will appear highlighted. Click the date that corresponds to the restore-point you would like to restore.



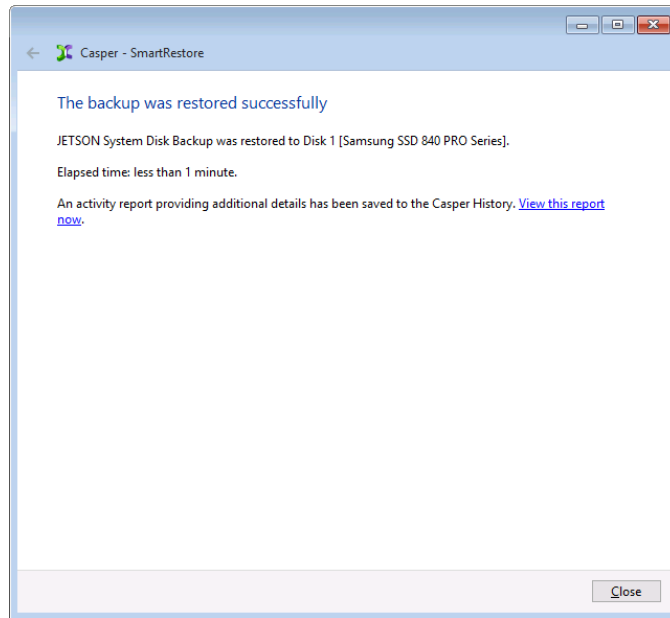
3. Click **Restore this backup**.



4. If restoring to the original system disk device, Casper will warn you that the contents will be overwritten. Click **Yes, begin the restore now**.



5. When Casper has completed the restore, click **Close**.

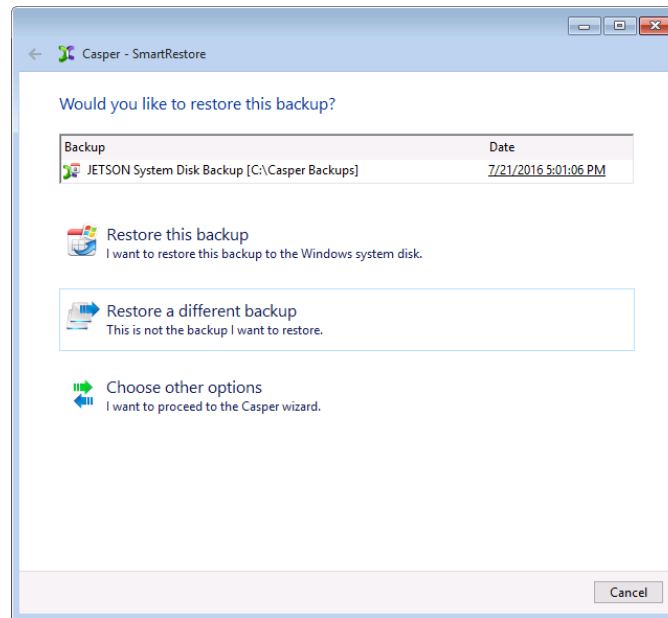


Example 3: Restoring a Different System Backup

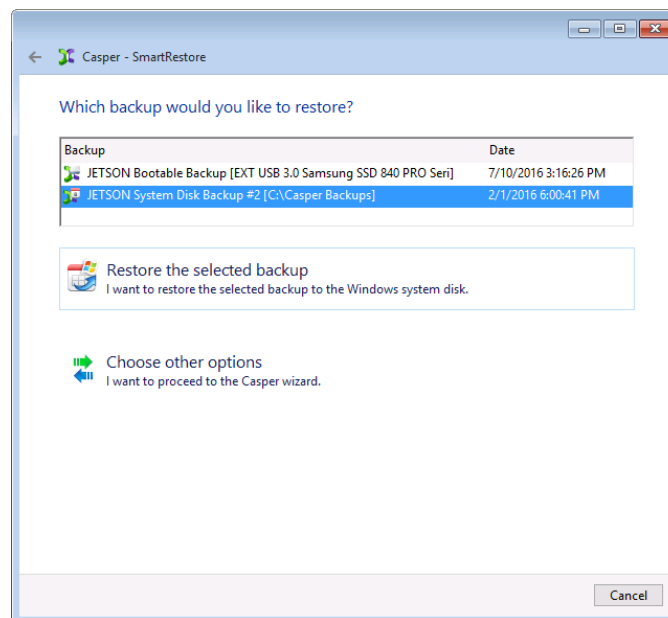
If SmartRestore discovers multiple backups (e.g., one or more restore-point backups, bootable backups, or a combination of the two), you can choose which backup to restore.

Assuming the computer is presently booted to the Casper Startup and Recovery Environment and SmartRestore was able to locate multiple backups for the computer, the following procedure illustrates how to select which backup to restore to the system disk device.

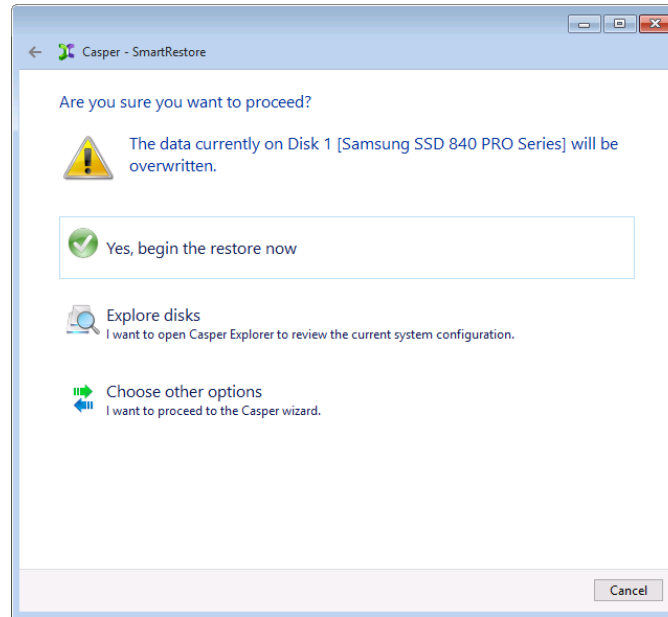
1. Select **Restore a different backup**.



2. Choose the backup you would like to restore from the list provided, and then click **Restore the selected backup**.



3. If restoring to the original system disk device, Casper will warn you that the contents will be overwritten. Click **Yes, begin the restore now**.



4. When Casper has completed the restore, click **Close**.

